



LASE 3000D-C4-1xx Series

3D Laser scanner



The laser scanners out of the LASE 3000D-C4-1xx Series are three-dimensional measurement devices which are especially built for measurements in harsh industrial environments and for numerous outdoor purposes.

The high performance 3D laser scanners from the product range of the LASE 3000D Series are based on the components of a 2D laser scanner out of the LASE 2000D-11x-Series and a swiveling platform which is powered by a servo-drive. A high resolution encoder on the servo-drive measures the angle of rotation of the platform and by connection of the 2D laser data with the encoder data, high precision 3D profile measurements are produced. Optionally LASE can provide sophisticated software either to control and collect data from the laser scanner or for complete measurement solutions.

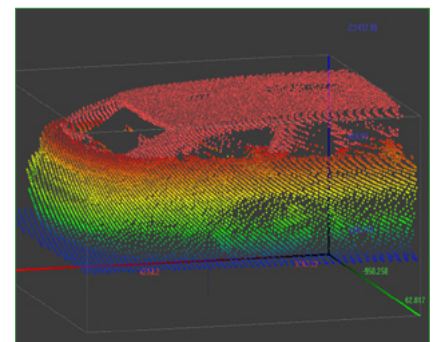
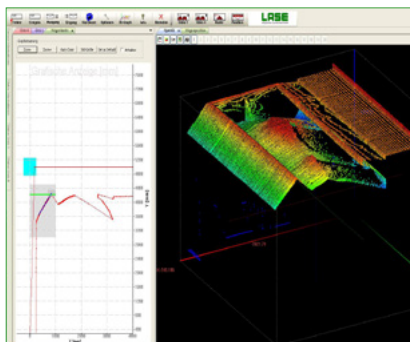
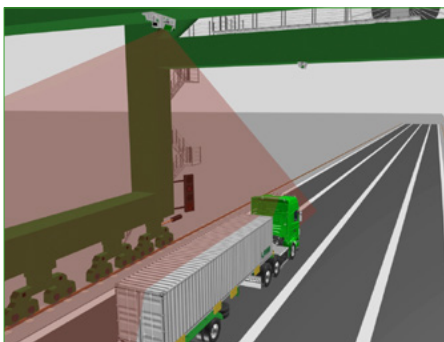
With its large measuring range, unrestricted scan angle and high angular resolution the LASE 3000D-C4-1xx Series is suitable for a huge variety of industries and applications such as:

- Measurement of dimensions, profiles or levels of objects and environments
- Object positioning
- Container recognition/measurement in ports
- Support of crane open-loop controls by goods detection
- Object protection
- Bulk material measurement at heaps, piles, bunkers or trucks

Features and Benefits:

- Contactless long range 3D profile measurement
- High accuracy, high resolution and fast measuring rate
- Unique stable object detection
- Range of up to 40 m on dark natural surfaces
- Range of up to 80 m on natural surfaces
- Scan area up to 270° x 360°
- Large variety of interfaces
- Self-test incorporated
- User friendly software
- Simple installation
- Rugged construction type to IP 65
- Outdoor applicable due to integrated heating

Typical applications



Technical data

Model

LASE 3000D-C4-1xx

DISTANCE MEASUREMENT

Measurement range	1 ... > 40 m	at 10 % target reflectivity
	1 ... > 80 m	at 90 %
Laser safety class	class 1	EN/IEC 60825-1; eyesafe

SCAN AND PROFILE MEASUREMENT

Usable scan angle	270°	
Angular step width	0,25° ... 0,5°	choosable
Scan frequency	50 / 25 Hz	1 Hz steps
Rotation angle: platform	up to ± 120°	
Angular resolution: platform	0,002°	
Swivel speed	max. 150°/s	

INTERFACES

Ethernet	100 Mbit/s	TCP/IP
----------	------------	--------

ELECTRICAL & MECHANICAL

Power supply	servo: 24 VDC ± 2 V / max. 8 A	
Protection class	IP 65	to EN 60529
Weight	5 kg	

ENVIRONMENT DATA

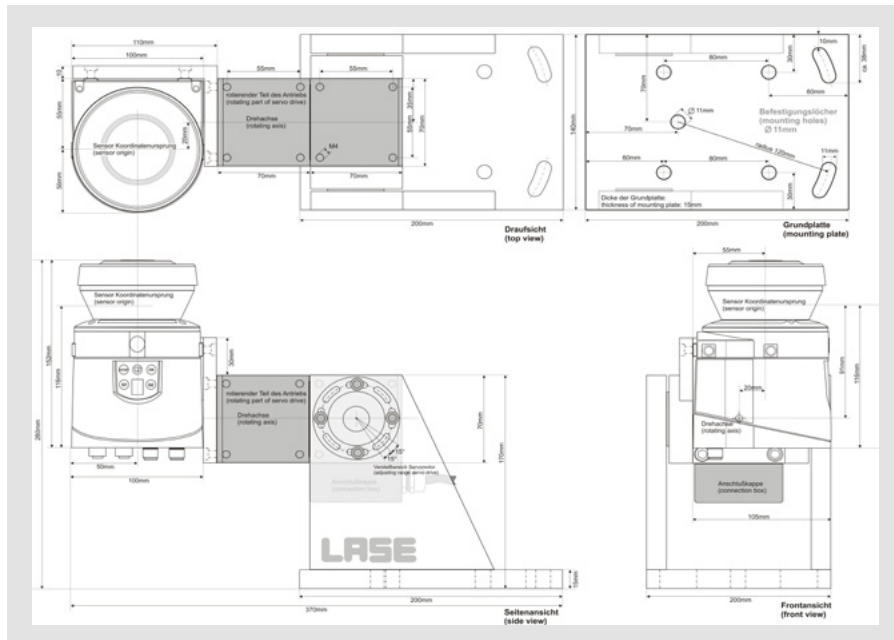
Temperature range	operation: -25° C ... +50° C	with optional heating system
	storage: -10° C ... +70° C	
Shock & Vibration	IEC 68	to EN 60068-2-27, 60068-2-28, 60068-2-29

OPTIONS

Connection box	power supply 24 VDC / 15 A - Heating	
	ethernet 5-port switch	
	CAN-Ethernet converter	
	fuses, terminals, fittings	
Cable set	required data and power lines in lengths of: 5 m, 10 m or 20 m	

Scope of delivery:

- 3D laser scanner
- Operating instruction
- CD-ROM



Contact

LASE Industrielle Lasertechnik GmbH

Rudolf-Diesel-Str. 111
D - 46485 Wesel

Tel.: +49 (0) 281 - 9 59 90 - 0
Fax: +49 (0) 281 - 9 59 90 - 111
E-Mail: info@lase.de
Website: www.lase.de