



# LaseSPF – Slab Positioning Furnace

*Solutions for Steel Products*



By using the measurement system LaseSPF – Slab Positioning Furnace slabs can precisely be positioned before being pushed into the furnace.

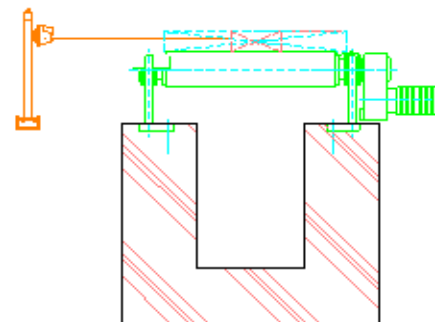
The laser measurement system scans in a level of 140 mm above the roller table. When the slabs move or lie in the scan field, their position is measured from its front and long side. The raw data from the laser scanner (distances and angle) are sent to the LASE measurement PC.

The PC evaluates the measurements and the compressed information for the slab head and slab feed-position are created. This information enables the superior roller control system to place the slabs very accurately.

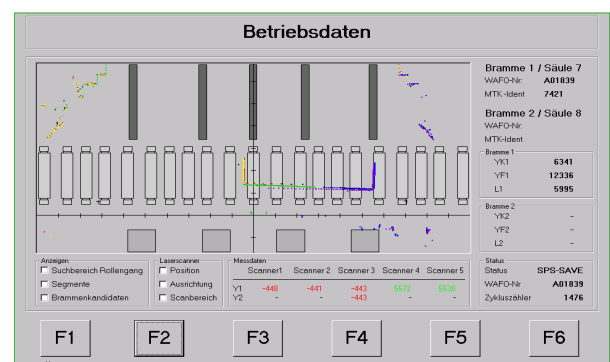
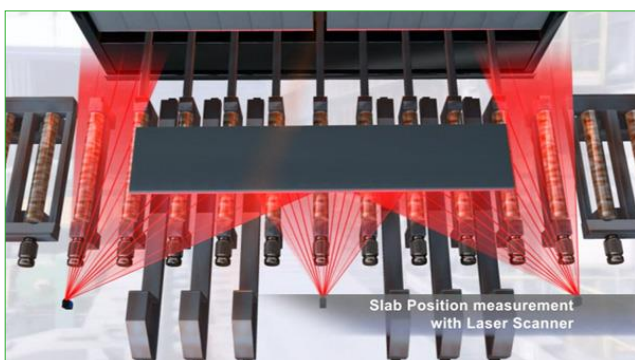
It is possible to determine the position of a long slab or two short slabs in front of the furnace.

## Features & Customer benefits:

- Fast and precise slab position measurement
- Approximate “real time” position data
- Absolute value measurement
- Rugged measuring technology
- Recording of slab measurement data at any position on the roller table
- Automatic entry operation
- Protection of the furnace against damage of the carrier mechanism and the furnace wall by exact positioning
- Avoidance of material confusions by verifying the slab length



## Function principle



LASE offers innovative and productive solutions by combining state-of-the-art laser hardware technology and sophisticated software applications. We deliver a broad range of precise and reliable 1D, 2D and 3D laser systems, which can be used for several measurement tasks.

We look to develop long-term relationships with our customers to drive projects forward and help improve safety and efficiency at a huge diversity of applications worldwide through working closely with them.

COMPETENCE, CREATIVITY AND PASSION lead us to be the ideal partner for your requirements. Convince yourselves of our broad portfolio of innovative products and solutions on our corporate website.

**Note:**

We reserve the right to proceed technical changes or modify the contents of this document without prior notice. LASE Industrielle Lasertechnik GmbH does not accept any responsibility whatsoever for potential errors or possible lack of information in this document. We reserve all rights in this document and in subject matter and illustrations contained herein. Any reproduction, disclosure to third parties or utilization of its contents - in whole or in part - is forbidden without prior written consent of LASE Industrielle Lasertechnik GmbH.

© 2015

**Contact****LASE Industrielle Lasertechnik GmbH**

Rudolf-Diesel-Str. 111  
46485 Wesel

Telefon: +49 [0] 281 - 9 59 90 - 0  
Fax: +49 [0] 281 - 9 59 90 - 111  
E-Mail: [info@lase.de](mailto:info@lase.de)  
Website: [www.lase.de](http://www.lase.de)

